



## Instructions for use

- Tata Pad is a universal anti-abandonment system designed and developed to signal the presence of a child in the car and warn users when they accidentally leave the car without the child.
- Tata Pad is a device that supports the supervision activities of parents/guardians for children under the age of 12 and under 150 cm tall.
- Tata Pad is placed on the car seat and can detect a child's presence on it. Its application from the App Store and Play Store alerts the parent via an alarm if he/she leaves the car with the child sitting in the seat. Moreover, if the parent does not intervene, a call will be sent to the parent. In either case, if nobody turns off the alarm, then an emergency call will be placed. An SMS will also be sent to the preselected numbers with GPS indicators to identify the child's location.

**1. Package contents:**

- 1x Tata Pad
- 1x Instruction booklet

**2. Technical features:**

Connection  
Bluetooth 4.2

Compatibility  
iOS: ≥ 11.0  
Android: ≥ 5.0

Frequency  
band  
2.4 GHz

Transmission  
power:  
Up to 3 dBm

Battery  
Power Supply: 2x CR 2032  
replaceable  
Duration: 1 year

Operating  
temperature:  
-5° +140°F

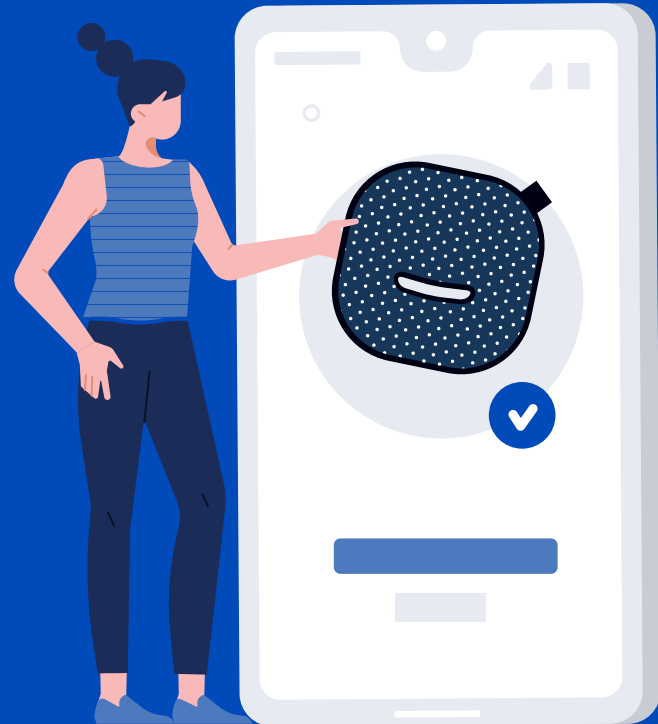
A product by:  
Filo Srl  
Via Marsala 29 H/I,  
00185 Rome (RM)  
Italy

**filo**



# Quick start installation guide

Follow these simple instructions  
to start using Tata Pad



[www.getmytata.com](http://www.getmytata.com)



1

### Download the app

Download the "Tata" application through the App Store or Play Store.



### Requirements:

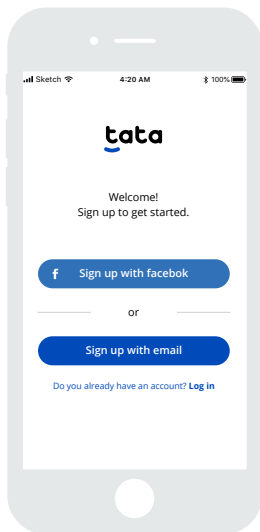
Bluetooth LE 4.2  
iOS: ≥ 11.0  
Android: ≥ 5.0



Scan the QR Code to download the app quickly.



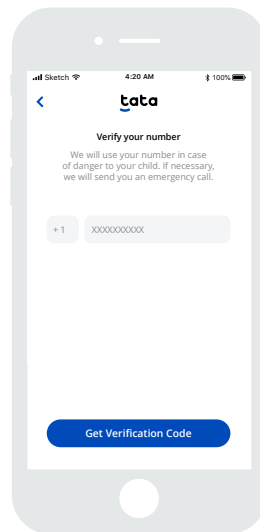
2



### Register

Register by clicking on "Register with email" or by logging in via a Facebook account. If you already have a registered account, then click on "Login" and enter your credentials.

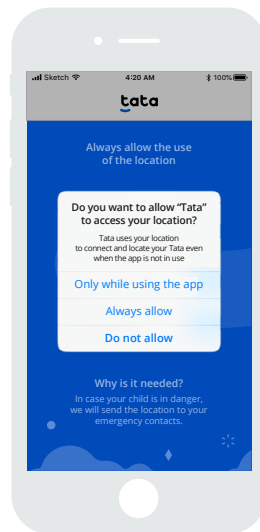
3



### Verify phone number

Enter your telephone number and verify it by following the app's simple instructions. We will only use your number to alert you in case of danger to your child. If necessary, we will contact you with an emergency call.

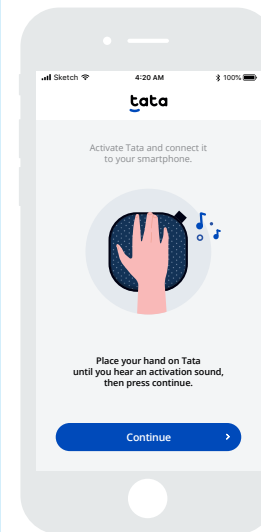
4



### Activate services

Activate and enable all the services that the app requires. Without these permissions Tata Pad cannot work properly.

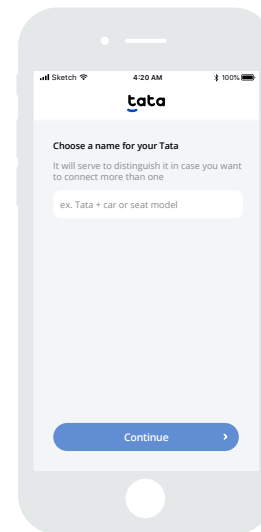
5



### Activate Tata Pad

Place your hand on Tata Pad and apply pressure until hearing the activation sound, then press continue.

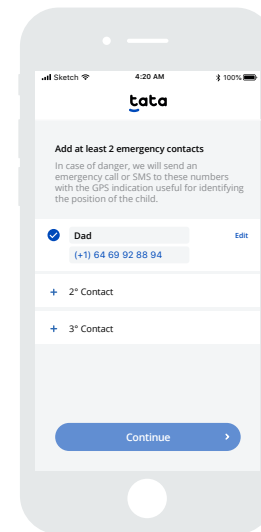
6



### Choose a name for Tata Pad

Customize Tata Pad with a name. This helps you find it in the app if you want to connect more than one.

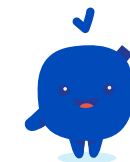
7



### Set up emergency contacts

Enter 3 contacts. These numbers will be alerted via a call followed by an SMS only if the first alarm levels are not correctly deactivated.

Well done!



You have completed the Tata Pad configuration.

For any issues, please contact:  
help@getmytata.com



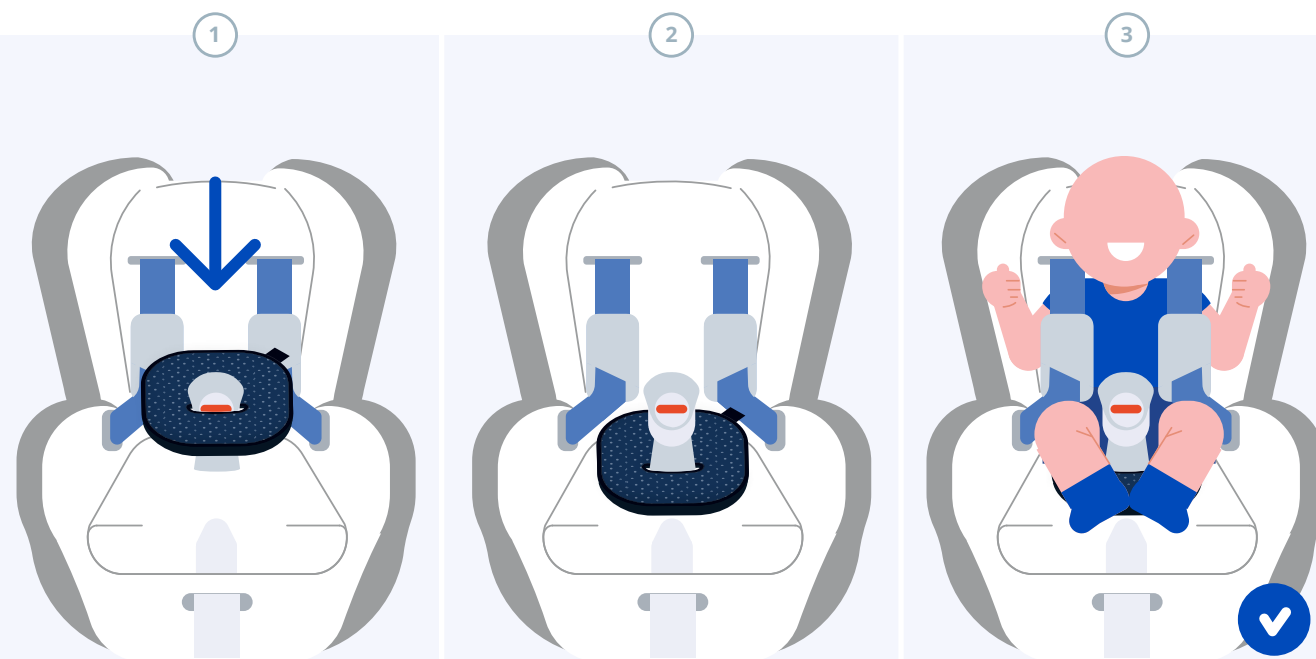
Before starting, open the zip of the Tata Pad and insert the batteries (2x CR2032) with the positive (+) side upwards, as explained on the package insert inside the box.



### How to place Tata Pad

Place Tata Pad on the seat and insert the seat belt anchorage through Tata Pad's horizontal slot.

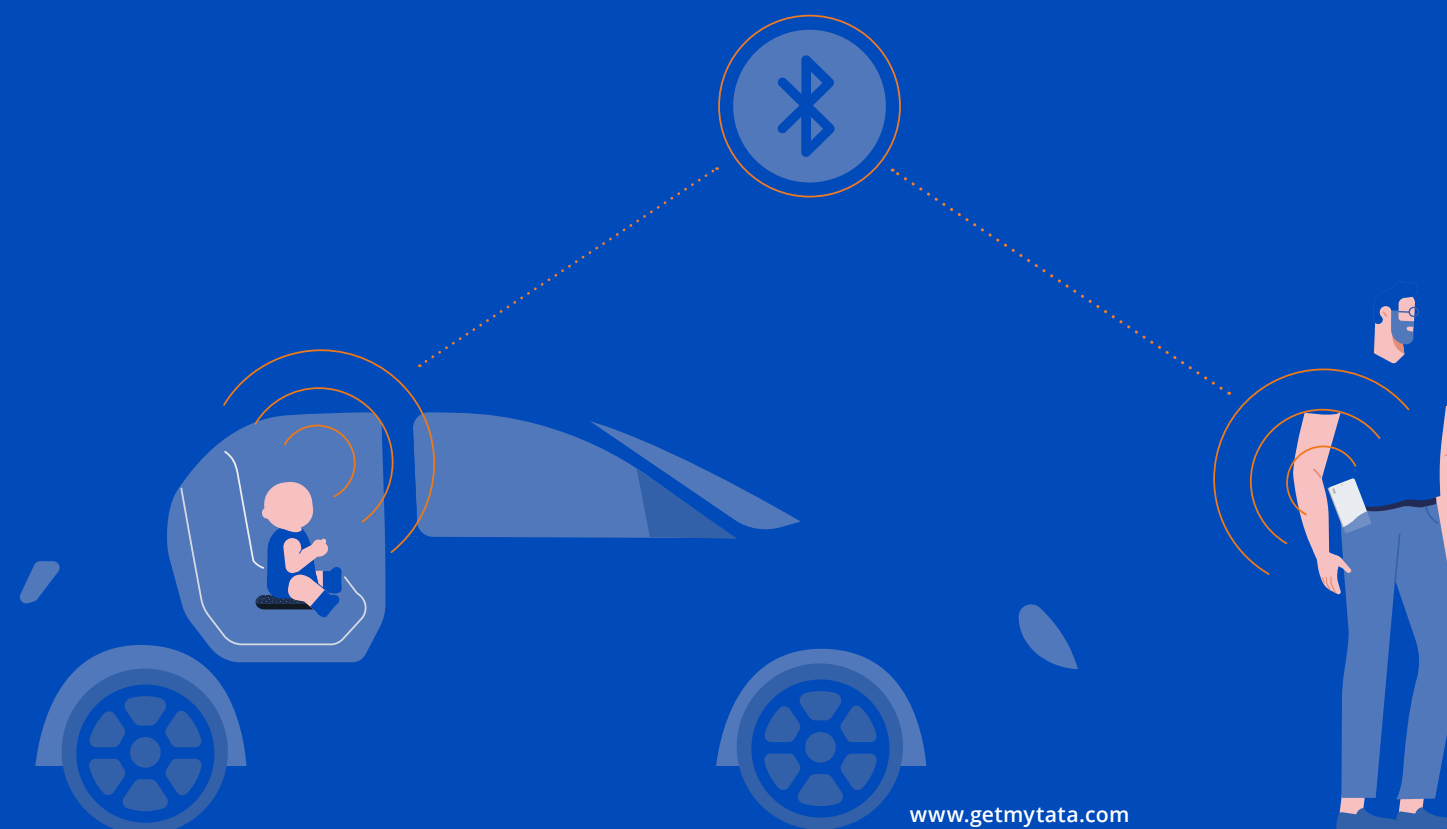
If there are any reducers or covers used with the car seat, Tata Pad must be placed above them for proper functioning.



tata

## Functions

Find out how Tata Pad works. Tata Pad is the only smart cushion with 3 alarm levels that guarantee top safety all the time.



#### HOW IT WORKS

### The three alarm levels

The alarm system starts when the parent is getting away from the car and Tata Pad detects the baby still on board.



3 MIN

#### 1ST ALARM LEVEL

### Sound notification on your smartphone

If you leave the car with the child still in the car seat, then you will receive an alert notification on your smartphone (even if on silent mode). Turn off the alarm through the app.



4 MIN

#### 2ND ALARM LEVEL

### Call on the smartphone

If you do not deactivate the first alarm level, then our virtual switchboard will automatically call your smartphone (in fact, it recognizes you as the last person who was next to the child). By following the instructions of the call, you can choose to disable the alarm or receive the child's GPS position via an emergency SMS.

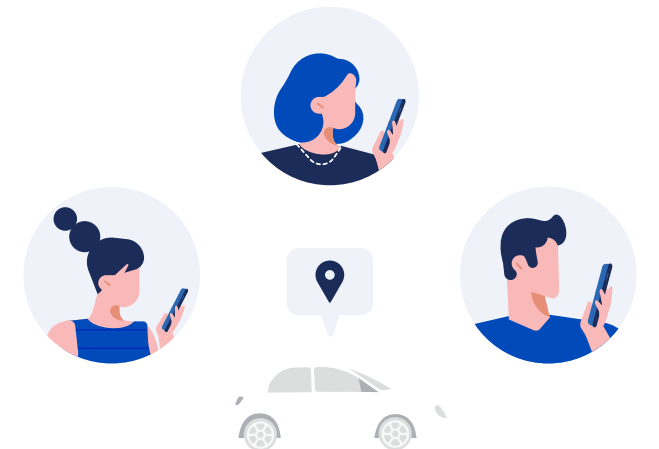


7 MIN

#### 3ND ALARM LEVEL

### Call and SMS to the emergency contacts

If the second alarm level is not deactivated, then our virtual switchboard will automatically call the contacts indicated in the app. Following the phone call's directions, the alerted contacts can choose to disable the alarm (option 1) or receive an SMS with the child's GPS location (option 2).



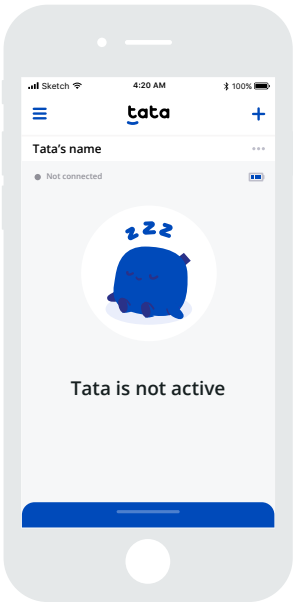
App components

The figure on the side shows the app's main screen elements after connecting a Tata Pad.

- 1. The mascot and the text below it indicate the detection status of the child on the seat.
- 2. "Connected" indicates whether your smartphone is connected via Bluetooth® or not to the Tata Pad cushion.
- 3. Tata Pad's given name
- 4. Tata Pad battery level
- 5. Tata Pad settings
- 6. App general menu
- 7. Add a new Tata Pad
- 8. List of Tata Pads connected to the smartphone



STATUS 1

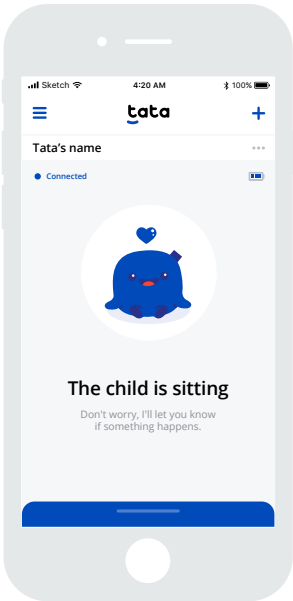


The child is not seated

Tata Pad cannot detect the child's presence. This means that the cushion is in a dormant state, ready to activate as soon as the child sits on it.

● Not connected  
This indicates that the smartphone is not connected to Tata Pad via Bluetooth® because the parent is far away.

STATUS 2

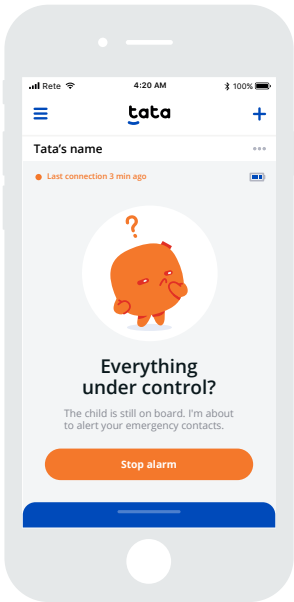


The child is seated

Tata Pad detects the presence of the child. In this case, Tata Pad notifies the connected smartphone that the system is active.

● Connected  
This indicates that the smartphone is connected to Tata Pad because the parent is near.

STATUS 4

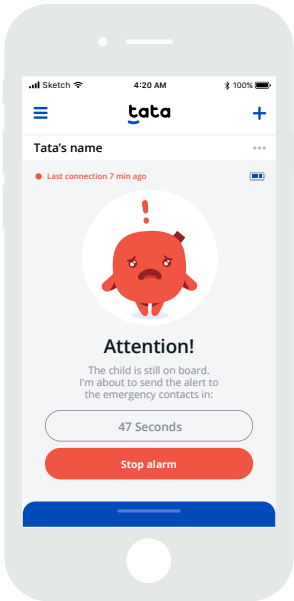


The child is seated, and the parent has stepped away.

The parent has walked away from Tata Pad while the child was on board. The system is in alarm because it has detected the presence of the child on board, but the parent is far away (1st Alarm level).

● Last connection 3 min ago  
This indicates how many minutes the parent has moved away from the Tata Pad cushion.

STATUS 4



The child is seated and the parent has stepped away. The parent did not respond to the previous alarms.

The parent is away from Tata Pad and has not responded to previous alarms. The system is starting to call emergency contacts. (3rd Alarm level).

● Last connection 7 min ago  
This indicates how many minutes the parent has moved away from the Tata Pad cushion.



## Maintenance and assistance



[www.getmytata.com](http://www.getmytata.com)

### Washing

The external cover is removable and washable at 85°F. Follow the instructions carefully to avoid damage:

1. Open the zipper and remove the inside to be stored in a dry, clean place when free of any covering.
2. Reinsert the interior after washing and after the case is dry, placing the sensor in the same direction in which it was removed.
3. Do not tamper with or disassemble the interior, and do not remove the sensor or its parts.
4. Washing the product in a washing machine at 85°F more than five times is not advised.

### Warranty

The product is guaranteed against any lack of conformity in normal conditions of use in accordance with the instructions for use. Therefore, the warranty will not apply in case of damage from improper use, wear, or accidents. For the period of warranty on product defects, please refer to the specific provisions of the national regulations applicable in the country of purchase, where provided.

### Assistance

For information and assistance, write to:  
[support@filotrack.com](mailto:support@filotrack.com)

Disclaimer

- Tata Pad was designed as a support device for parental supervision and, as such, does not replace it.  
  
Use of Tata Pad does not, in any way, substitute the responsibility and/or supervision of the vehicle's driver (and/or of its other occupants). Tata Pad is only a support tool. Never leave your child unattended in a car.  
  
Filo S.r.l. cannot, in any way, be held responsible in case of adverse events and/or consequences (also linked to electronic device malfunction) of any kind, since Tata Pad is solely an aid and alarm device for preventing events and/or consequences caused by forgetfulness.  
  
The use of the device does not, in any case, replace the supervision and responsibility of the driver/custodian/attendant/sitter/guardian or whoever has the child in safekeeping.  
  
Read this booklet carefully before installing and using Tata Pad and the related App. In fact, it is necessary to understand its functions, characteristics, and limits before using them.

For correct operation

- Checks to be performed for each Tata Pad use:
  - The smartphone must be switched on and have enough autonomy for the period of paired use with Tata Pad.
  - Bluetooth® must be active.
  - The airplane mode must be deactivated.
  - GPS must always be active.
  - The smartphone must have an active data connection.  
Failure to comply with the above will result in Tata Pad and/or Tata app malfunctioning, which may disable the system and/or not allow alarm messages to be sent and/or received.  
  
Tata Pad works only in the presence of a smartphone with Tata app installed.  
  
If the smartphone is turned off, then Tata Pad cannot function properly.  
  
If Bluetooth® is damaged, then Tata Pad cannot function properly.  
  
Download the Tata app from official stores only.  
  
Phone location permission must be enabled for the Tata app to support the full system operation.

Warnings

- Do not leave packaging materials within reach of children as they are potentially dangerous.  
  
Before use, check that the product and all its parts are not damaged. Otherwise, do not use the device and contact qualified personnel or the retailer instead.  
  
Correct Tata Pad storage is important to fully preserve its functioning and must comply with temperature (from -5°F to +140°F) and humidity (< 95%) constraints.  
  
Insert the batteries, making sure the polarity is correct.

Battery

- Tata Pad is powered by two CR2032 batteries.  
  
Tata Pad's battery level can be monitored through the app. In case of low level, the user can independently replace the battery. The new battery must have the same characteristics and respect the correct polarity.  
  
To replace the battery, the user needs to open the zipper and extract the interior, making sure to keep it in a dry and clean place when free of its cover.  
Lift the frontal terry of the extracted piece where two cuts (just below the central hole) can be seen. Replace the two batteries, making sure to respect the correct polarity.

Declaration of conformity

- With the document herein, Filo warrants that Tata Pad complies with the seven essential requirements and the other relevant provisions established by the 2014/53/EU Directive. A copy of the complete declaration of conformity can be consulted at: [getmytata.social/certificazione-conformita](https://getmytata.social/certificazione-conformita)  
  
According to the European Commission decision No. 2000/299/EC dated 04/06/2000, the frequency band used by this product is harmonized throughout the EU countries. Therefore, this is a class 1 product and can be freely used in all countries of the European Community.

Model: Tata Pad  
Contains FCC ID:QOQBGM12LMA

This device complies with part 15 of the FCC Rules. Operation is subject to the following two conditions: (1) This device may not cause harmful interference, and (2) this device must accept any interference received, including interference that may cause undesired operation.

NOTE: This equipment has been tested and found to comply with the limits for a Class B digital device, pursuant to part 15 of the FCC Rules. These limits are designed to provide reasonable protection against harmful interference in a residential installation. This equipment generates, uses and can radiate radio frequency energy and, if not installed and used in accordance with the instructions, may cause harmful interference to radio communications. However, there is no guarantee that interference will not occur in a particular installation. If this equipment does cause harmful interference to radio or television reception, which can be determined by turning the equipment off and on, the user is encouraged to try to correct the interference by one or more of the following measures:

- Reorient or relocate the receiving antenna.
- Increase the separation between the equipment and receiver.
- Connect the equipment into an outlet on a circuit different from that to which the receiver is connected.
- Consult the dealer or an experienced radio/TV technician for help.

IMPORTANT: Changes or modifications not expressly approved by Filo S.r.l. could void the user's authority to operate the equipment.



THIS PRODUCT  
IS IN COMPLIANCE WITH  
EU DIRECTIVE 2012/19/EC.

The symbol of the crossed bin shown on the equipment indicates that, at the end of its life cycle, the product requiring separate disposal from domestic waste, must be taken to a differential waste collection center for electric and electronic equipment or returned to the seller when a new, equivalent piece of equipment is purchased. The user is responsible for handing over the piece of equipment to the appropriate differentiating center at the end of its life cycle. Suitable differentiated waste collection in prevision of the re-cycling of the decommissioned equipment and eco-compatible disposal contributes to preventing possible negative consequences to the environment and health and encourages the recycling of materials used to manufacture the product. Unauthorized disposal of the product by the user entails administrative penalties pursuant to Legislative Decree no. 22/1997 6 (Art.50 et seq. of Legislative Decree 22/97). For more information on the collection systems available, please contact your local waste disposal service or the shop where you purchased the product.



COMPLIANCE WITH EU DIRECTIVE  
2006/66/EC AND SUBSEQUENT  
AMENDMENTS.

The symbol of the crossed-out bin shown on the batteries or on the product packaging indicates that, at the end of its useful life, these items need to be treated separately from household waste. They must not be disposed of as urban waste, but transferred to a waste disposal center for separate collection, or returned to the retailer when purchasing new rechargeable and non-rechargeable batteries. The possible chemical symbol Hg, Cd, Pb, placed under the crossed-out bin indicates the type of substance contained in the battery, Hg = Mercury, Cd = Cadmium, Pb = Lead. Users are responsible for providing the end-of-life batteries to the appropriate collection facilities in order to facilitate treatment and recycling. The adequate separate collection for the subsequent forwarding of dead batteries for recycling, processing and environmentally compatible disposal, helps to avoid possible negative effects on the environment and on human health and promotes the recycling of substances contained in the battery. Unauthorized disposal of the product by the user involves damage to the environment and human health. For more information on the collection systems available, please contact your local waste disposal service or the shop where you purchased the product.



